



CAR WASHES



PAY STATIONS



**SELF-SERVICE
WASH BAYS**



**CENTRAL
VACUUM
SYSTEMS**



**WATER
TECHNOLOGY**



**SERVICE &
MAINTENANCE**



**PLANNING &
DESIGN**



**PRODUCTION &
INSTALLATION**



**PREMIUM
SUPPLIER**

CONTENTS

		Schleicher Autowaschtechnik Page 04	Planning of overall projects Page 06	Your individual car wash park Page 08	Car washes Page 10
Car wash	Preparation	Pre-wash Page 18	Conveyor equipment Page 20	Information & adver- tising elements Page 22	Chemical & foam application Page 24
	Washing	High-pressure wash Page 30	Washing & polishing Page 34	Care zone Page 48	
	Drying	Drying Page 50			
		Engineering room Page 62	Water technology Page 64	Central vacuum systems Page 68	Self-service wash bays Page 70
		Pay stations Page 72	Maintenance & service Page 73		

Legend

Crankable unit:



Example

Crankable units allow space-saving combinations with a mountable unit.

Mountable unit:



Example

Mountable units can be positioned under a crankable unit to save space.

SCHLEICHER AUTOWASCH- TECHNIK

Our specialist company is located in the centre of Germany, near the city of Fulda. From this central location, we plan and implement challenging projects all over the world – our customers include individual companies, medium-sized enterprises and corporate groups in Europe, Asia and South America.

Our working methods are characterised by our uncompromising commitment to quality and customer satisfaction. Schleicher car washes are individually designed taking into account all customer requirements, manufactured in our own production facilities and assembled on site with care and attention to detail. We offer a comprehensive “one-stop” service and guide our customers through every step of the process, from development of the first concept all the way to a ready-to-use car wash – and beyond.

We attach great importance to a future-oriented, sustainable corporate strategy. This includes regularly training dedicated young people to become precision mechanics, technical product designers, electronics technicians and business professionals. This enables us to continually expand our team with qualified, motivated employees and to support continuous growth of our company.

Schleicher Autowaschtechnik is an experienced specialist for highly efficient, individually planned car washes. Since the company was founded in the year 2000, Markus Schleicher and his team have consistently focused on reliable technology, the highest quality materials and workmanship, as well as exceptional customer service.



We combine knowledge and experience with an eye for detail.

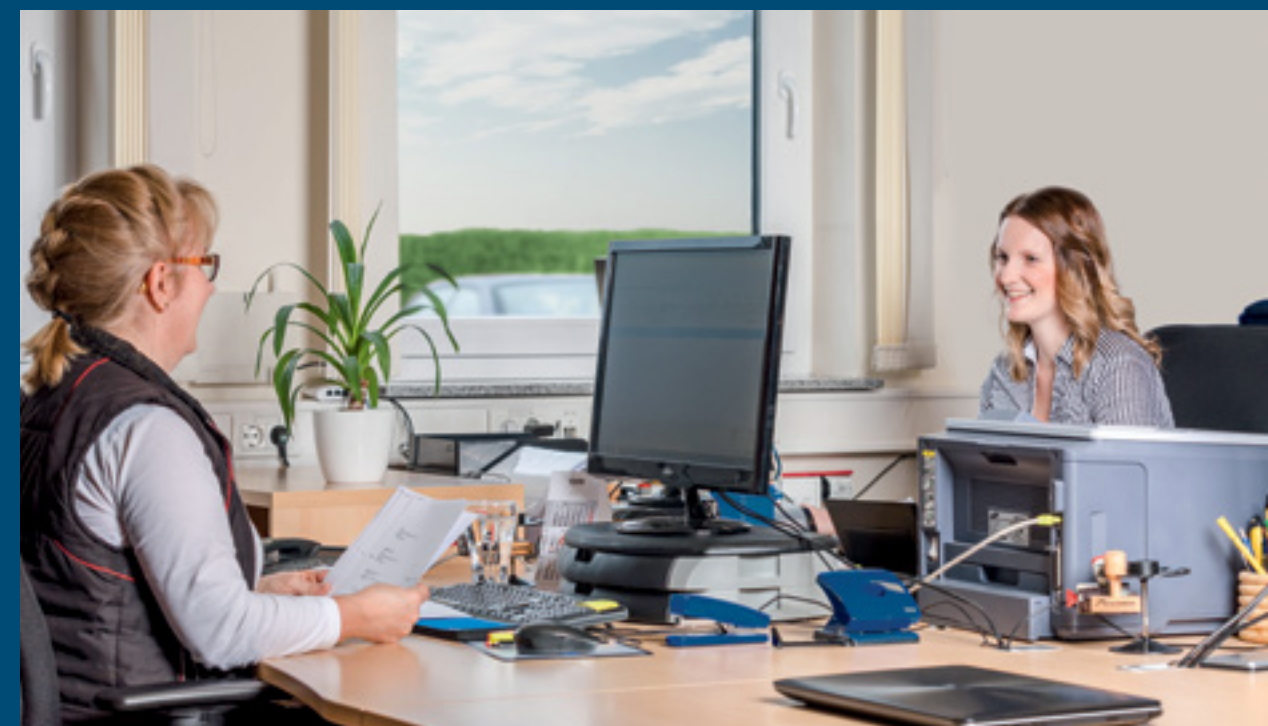
PLANNING OF OVERALL PROJECTS

We offer our customers a comprehensive overall concept in order to make their investment in a Schleicher car wash a success right from the very start: During the first concept development phase, we review the planned location of the new car wash, analyse factors such as demographics and transport links and make constructive suggestions for improvement, where necessary. In doing so, we actively contribute our many years of experience and also participate in clarifying detailed questions that go beyond our direct field of activity.

We accompany you through all stages of construction, provide concrete specifications for project implementation and are available at all times to advise all participating companies – such as architects, building construction and civil engineering companies.

We are happy to consider the individual requirements of our customers, but we also warn against projects that are not effective and always keep an eye on the profitability of the project. In this way, we ensure that our customers achieve sustainable success with their investment.

The range of services offered by Schleicher Autowaschtechnik not only includes the design and installation of car washes. Our focus is also directed towards in-depth consultation, cross-industry planning and close cooperation with companies involved in the project.



Our all-round carefree service: We guide every project from the initial concept through to its final implementation and support our customers with help and advice.



Preparation

- Pre-wash
- Conveyor equipment
- Information & advertising elements
- Chemical & foam application



Washing

- High-pressure wash
- Washing & polishing
- Care zone



Drying

Drying

YOUR INDIVIDUAL CAR WASH PARK



Water technology
Page
64



Engineering room
Page
62



Central vacuum systems
Page
68



Mobile
pay station
Page
72



Self-service wash bays
Page
70



Car wash
Page
10

Maintenance
& service
Page
73





15 - 25 m



Preparation

- Pre-wash
- Conveyor equipment
- Information & advertising elements
- Chemical & foam application



Washing

- High-pressure wash
- Washing & polishing
- Care zone

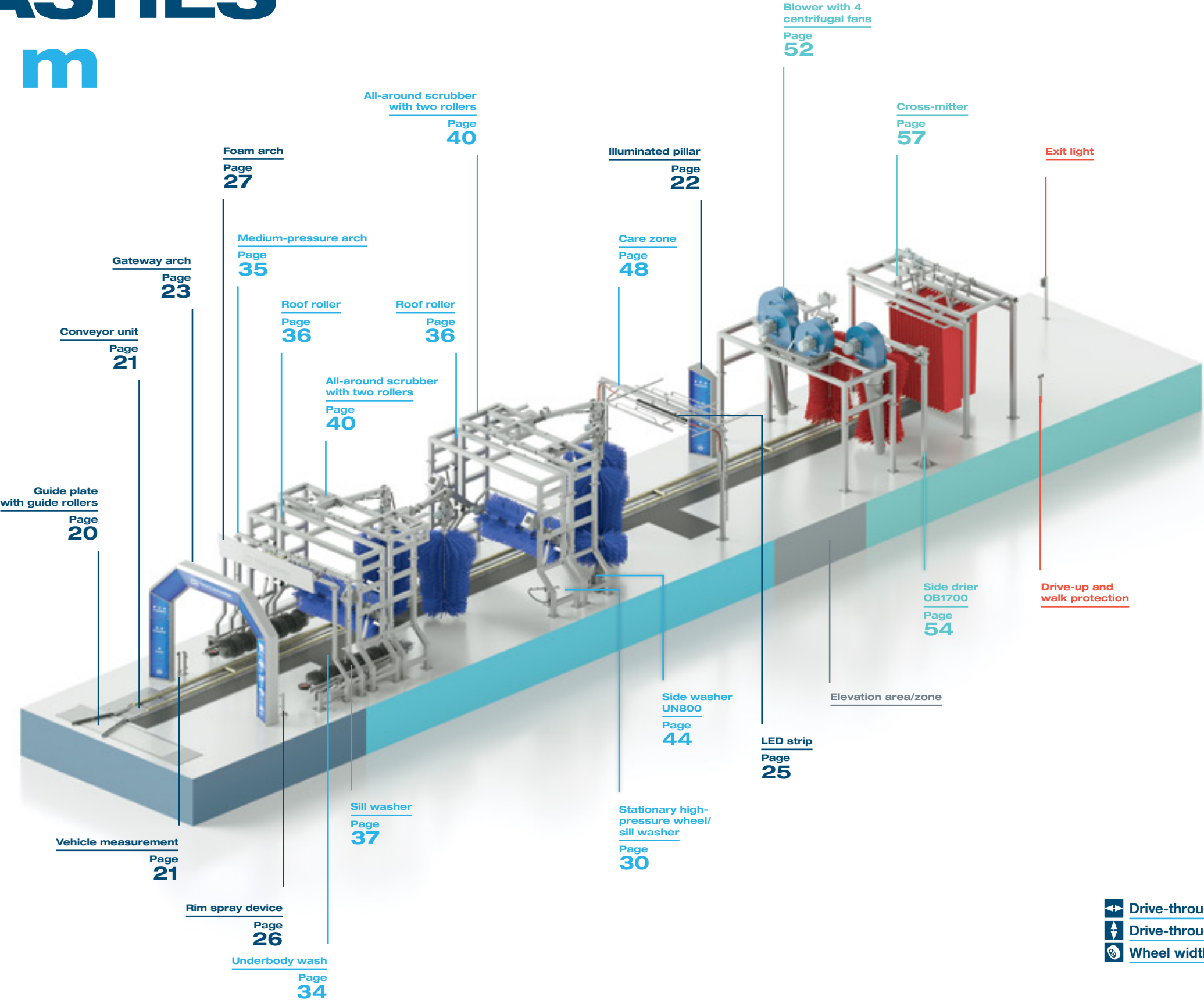


Drying

Drying

CAR WASHES

15 - 25 m



	Drive-through width	2.35 m
	Drive-through height	2.05 m
	Wheel width	380 mm

Length of towing unit



25 - 40 m



Preparation

- Pre-wash
- Conveyor equipment
- Information & advertising elements
- Chemical & foam application



Washing

- High-pressure wash
- Washing & polishing
- Care zone

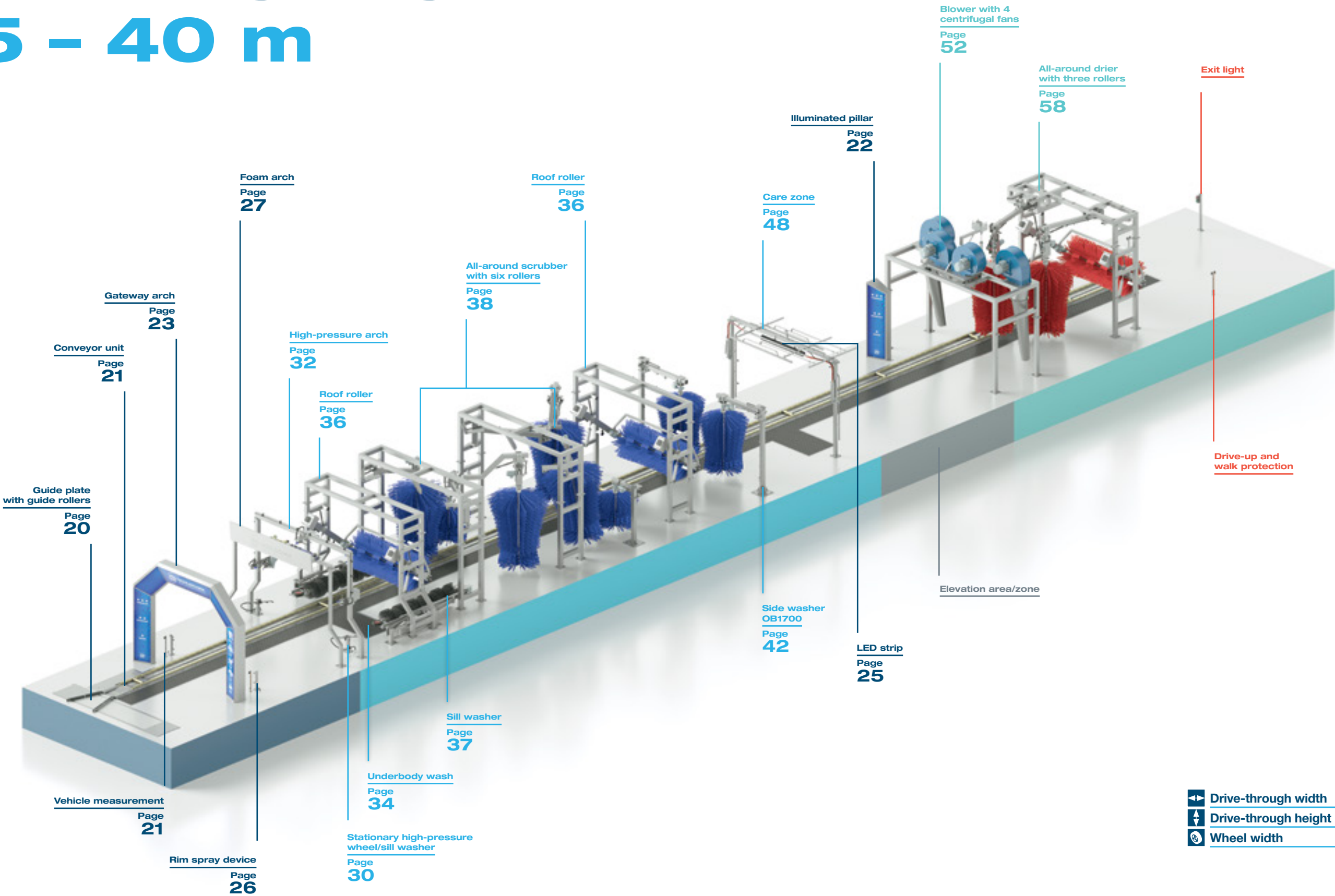


Drying

Drying

CAR WASHES

25 - 40 m



	Drive-through width	2.35 m
	Drive-through height	2.05 m
	Wheel width	380 mm



EXPRESS systems
40 m +



Preparation

- Pre-wash
- Conveyor equipment
- Information & advertising elements
- Chemical & foam application



Washing

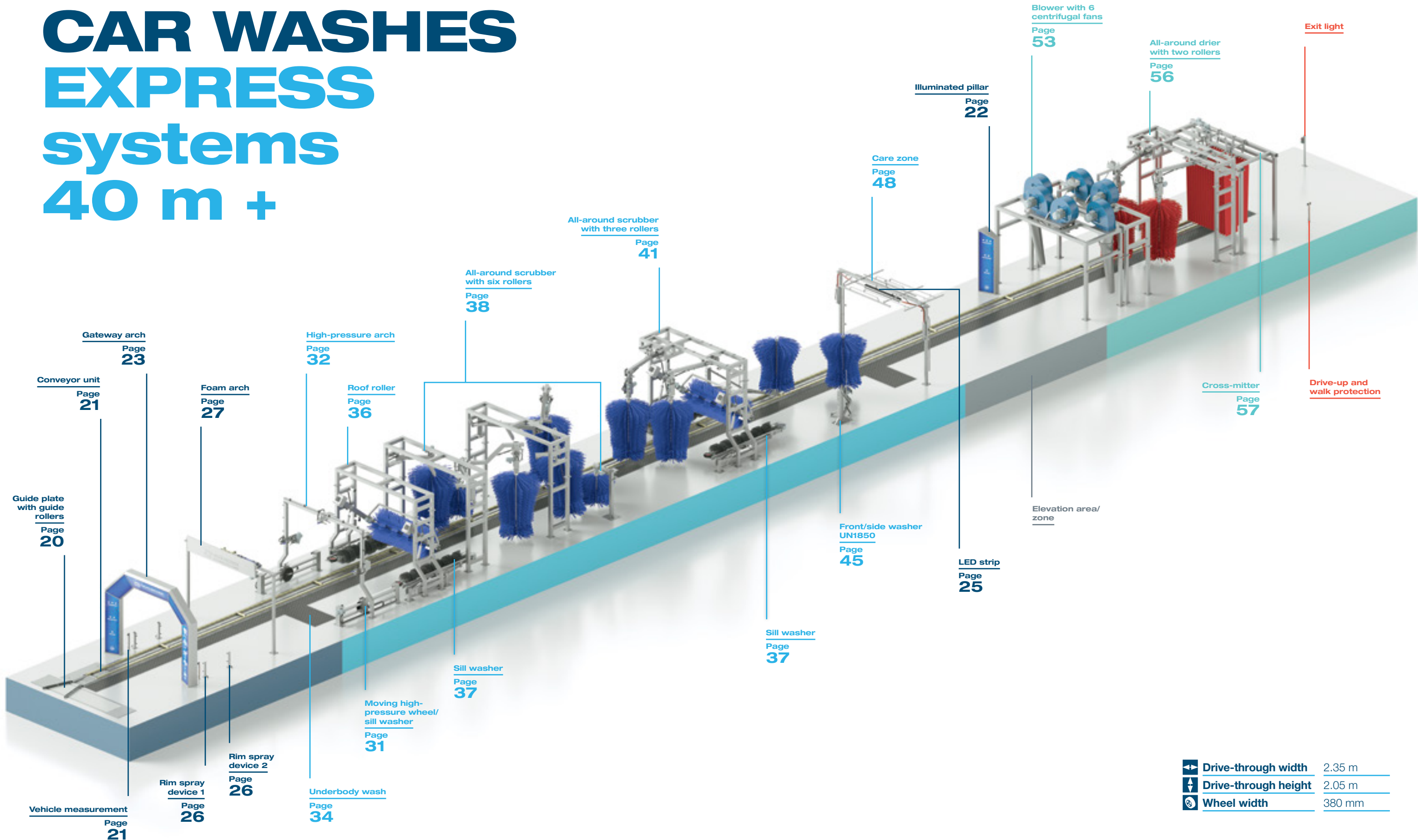
- High-pressure wash
- Washing & polishing
- Care zone



Drying

- Drying

CAR WASHES EXPRESS systems 40 m +



	Drive-through width	2.35 m
	Drive-through height	2.05 m
	Wheel width	380 mm

PREPARATION



Preparation

- Pre-wash
- Conveyor equipment
- Information & advertising elements
- Chemical & foam application



Washing

- High-pressure wash
- Washing & polishing
- Care zone



Drying

- Drying

PRE-WASH AREA INCL. COOLING ARCH

Summer. 30°C in the shade. The dark-coloured car to be washed has been parked in the blazing sun all day long. The paint on the vehicle literally boils.

If chemicals are applied directly in such a situation, the water evaporates too quickly.

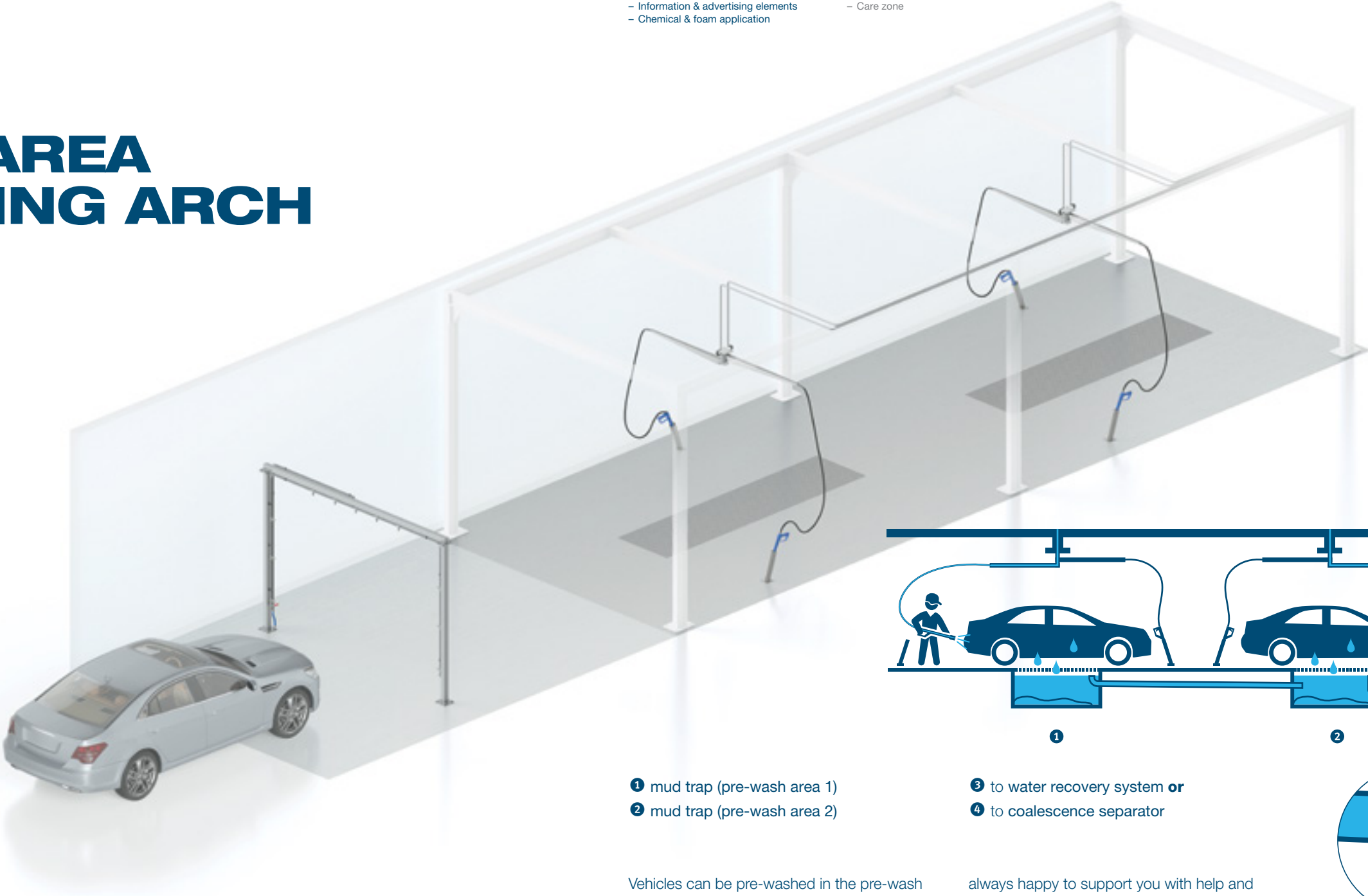
The result: the chemicals used cannot work effectively, and cleaning is made more difficult.

With our cooling arch it is possible to reduce this effect to a minimum by cooling down the entire vehicle surface.

The arch is made of stainless steel and is glass bead blasted. The piping is also made of stainless steel and has 10 screwed-in flood nozzles.

The system can be operated with either fresh or service water. Adding additives is also possible.

Depending on the design, a submersible or centrifugal pump is used to pump the water.



- 1 mud trap (pre-wash area 1)
- 2 mud trap (pre-wash area 2)

- 3 to water recovery system or
- 4 to coalescence separator

Vehicles can be pre-washed in the pre-wash area.

Here, for example, it is possible to apply cleaning agents to dissolve brake dust or insect dirt, allow them to take effect and wash off afterwards using a high-pressure cleaner.

Additional services can also be marketed in this area, such as manual rim cleaning.

As well as the possibility of offering additional services, customers can be greeted in a way that reflects your business's essence and personality, for example:
“We'll take care of you personally and are

always happy to support you with help and advice if you have any questions or requests. We are at your service, when you need us!”.

COOLING ARCH	
Material	Stainless steel
Finishing	Glass bead blasted
Pump power	0.65 – 2.2 kW
Litre capacity	80 l/min
Number of jets	10



PRE-WASH AREA	
CHEMICAL PRE-CLEANING	
Litre capacity	max. 3.3 l/min
Dosing rate	3 – 10%
HIGH-PRESSURE PRE-WASH	
Pump power	4 kW
Working pressure	150 bar
Litre capacity	max. 15 l/min



Preparation

- Pre-wash
- Conveyor equipment
- Information & advertising elements
- Chemical & foam application



Washing

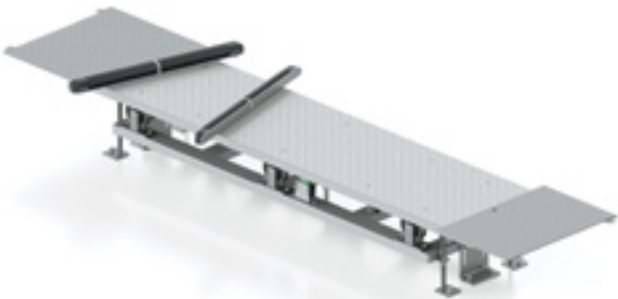
- High-pressure wash
- Washing & polishing
- Care zone



Drying

Drying

GUIDE PLATE WITH GUIDE ROLLERS



The V-shaped guide rollers arranged in combination with the guide plate ensure vehicles are fully automatically and mechanically centred in the conveyor system.

The guide rollers are made of plastic to ensure gentle wheel placement.

GUIDE PLATE

Material	Structural steel, aluminium drop plate
Finishing	Galvanized, thick layer passivated
Travel method	Mechanical, spring return
Travel path	465 mm
Installation dimensions	On request

GUIDE ROLLERS

Material	Stainless steel, plastic
Installation angle	V-shaped (15° – 20°)
Length	1000 mm
Roller diameter	50 mm

CONVEYOR UNIT

A drag roller attached to the conveyor chain is positioned gently behind the front wheel on the driver's side and conveys the vehicle fully automatically through the car wash. Here, all 4 wheels rotate on the vehicle.

Material	Structural steel
Finishing	Galvanized, thick layer passivated
Drive power	1.5 – 5.5 kW (depending on the length of the conveyor unit)
Chain speed	14 m/min
Internal guide rail height	60 mm
Wheel width	380 mm

DIRECT DRIVE



VEHICLE MEASUREMENT



Material	Stainless steel
Finishing	Glass bead blasted
Sensors	Light barriers, transmitter/receiver
Working height	550 mm

Through the interaction of

- defined vehicle transport
- vehicle measurement and
- electronic control

it is possible to detect the length and position of the vehicle and achieve precise control of the plant components.



Preparation

- Pre-wash
- Conveyor equipment
- Information & advertising elements
- Chemical & foam application



Washing

- High-pressure wash
- Washing & polishing
- Care zone



Drying

- Drying

ILLUMINATED PILLAR

The illuminated pillar is a visual addition to your elevation zone or exit area.

The body is made of stainless steel, the pane of plexiglass. The integrated LED lighting makes your specific design appear bright and clear!

Messages such as “Have a good trip”, “See you again soon” can be printed on the illuminated pillar according to your wishes. The shape and size can also customised.

The illuminated pillar can be installed on the driver's and passenger's side.



also available for passenger side

Material	Stainless steel
Surface	Brushed
Light output	approx. 200 W
Light colour	Cool white
Programme panel lighting	up to 8 programmes, plus 4 additional selections

GATEWAY ARCH



The gateway arch is the show piece of your car wash and gives your entrance its individual look.

The body is made of stainless steel, the panes of plexiglass. The integrated LED lighting makes your specific design appear bright and clear!

Programme indications, entry instructions as well as dimensions and shapes can be customised according to your requirements. The optional attachment of spray systems is also possible.

Material	Stainless steel
Surface	Brushed
Light output	approx. 500 W
Light colour	Cool white
Programme indication lighting	up to 8 programmes, plus 4 additional selections

Chemical &
foam application

SPRAY SYSTEM



optional with LED strip

The spray system applies an even and uniform layer of chemicals, for example, a pre-cleaning agent, all over the vehicle.

The spray jets are equipped with non-return valves, which enable precise control of the system and prevent it from running empty.

The system can be installed or integrated almost anywhere. The piping is made of stainless steel.

Piping	Geberit Mapress stainless steel
Litre capacity	29.6 l/min
Jet type	Flat jet, spray angle = 90°
Number of jets	8 units, all equipped with pressure-dependent water-saving valves



Working area:



Preparation

- Pre-wash
- Conveyor equipment
- Information & advertising elements
- Chemical & foam application



Washing

- High-pressure wash
- Washing & polishing
- Care zone



Drying

- Drying

FOAM SHOWER



optional with LED strip

The foam shower covers the entire vehicle with a closed foam layer.

This creates an enjoyable and striking visual effect for your customers and offers you, as the operating company, the possibility of generating an additional programme and marketing the service accordingly.

Material	Stainless steel
Finishing	Glass bead blasted
Process media	Compressed air, fresh water, chemicals
Number of foam cartridges	2
Litre capacity	10 l/vehicle



Working area:

LED STRIP



Dimensions (WxHxD)	1020x170x170 mm
Protection class	IP 65
Light output	72 W
Beam angle	45°
Colours	RGB colouring

Our LED strip makes a visual statement in your car wash!

You can use it to illuminate specific areas or make your cleaning and care products, such as foam, appear coloured.

Installation is possible almost anywhere – and creates an excellent visual impact!



Preparation

- Pre-wash
- Conveyor equipment
- Information & advertising elements
- Chemical & foam application



Washing

- High-pressure wash
- Washing & polishing
- Care zone



Drying

- Drying

RIM SPRAY DEVICE



Material	Stainless steel
Finishing	Glass bead blasted
Litre capacity	2 x 7.4 l/min
Jet type	Full cone, each equipped with pressure-dependent water-saving valves

The rim spray device is specially designed for the application of chemicals on wheel rims.

By means of a dosing pump, the chemicals used are mixed precisely with fresh or service water.

The jets are made of brass, and the posts of stainless steel.



FRONT/REAR SPRAYING



Material + surface	Stainless steel, brushed
Piping	Geberit Mapress stainless steel
Working pressure	4 bar
Jet type	Flat spray, 90°
Number of jets	2 rows with 4 jets each

The front/rear spray device enables targeted application of chemicals at the front and rear of the vehicle. No pit is required for installation.

It can be operated with service water or fresh water. The chemicals are injected using dosing pumps.



FOAM ARCH



The foam arch is a real eye-catcher in your car wash and an integral component for your premium wash programme!

It creates a sturdy wall of foam, which can also take centre stage in a variety of colours thanks to the integrated LED lighting.

The large sign made of stainless steel with transparent film serves as a welcome sign or advertising space.

Material + finishing	Stainless steel, glass bead blasted
Visible area of sign surface	Brushed
Process media	Compressed air, fresh water, chemicals
Lighting (optional)	LED strip
Special feature	Eye-catcher, additional service for premium wash programme



WASCHUNG

High-pressure wash

STATIONARY
HIGH-PRESSURE
WHEEL/SILL WASHER

The stationary high-pressure wheel/sill washer has been specially developed for removing stubborn dirt in the sill areas.

On the driver's side and on the passenger's side, 5 rotor jets each are arranged on a stainless steel pipe, the inclination of which can be easily adjusted at any time.

The base is made entirely of stainless steel, the pipe support is made of high-quality plastic.



Material + finishing	Stainless steel, glass bead blasted
Jet type	Full jet rotor nozzle
Rotation angle	20°
Working pressure	70 bar
Special feature	Adjustable pipe angle



Preparation

- Pre-wash
- Conveyor equipment
- Information & advertising elements
- Chemical & foam application



Washing

- High-pressure wash
- Washing & polishing
- Care zone



Drying

- Drying

MOVING HIGH-
PRESSURE WHEEL/
SILL WASHER

The high-pressure jets of the moving high-pressure wheel/sill washer, which rotate on the driver's and passenger's side, accompany the vehicle wheels over a distance of 2000 mm and as a result achieve a high-pressure washing process with an extended cleaning time.

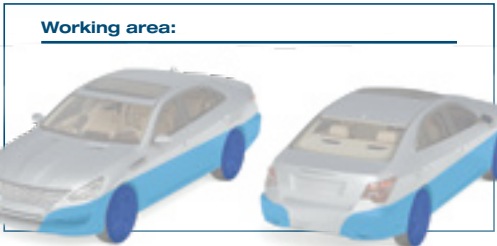
While the vehicle is moving in the direction of the exit, the two wheels of the front axle and the two wheels of the rear axle are detected with precise accuracy and cleaned one after the other.

When moving between the two previously mentioned cleaning steps, the sill areas are washed.

A durable plastic belt with a carefully integrated stainless steel core is driven by our proven standard motor and ensures both the movement of the high-pressure unit and the rotational movement of the jet nozzles.



Material + finishing	Stainless steel, glass bead blasted
Litre capacity	2 x 35 l/min
Working pressure	70 bar
Feed rate	up to 14 m/min
Special feature	Moving and simultaneously rotating jet nozzles



1 HIGH-PRES-SURE ARCH

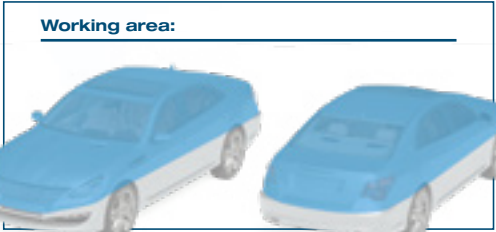
The high-pressure arch is equipped with three oscillating pendulum units and is able to detect all vertical and horizontal parts of a vehicle and clean them using high pressure.

Each pendulum unit has a separate motor, which is responsible for the pivoting movement of the jet nozzles.

In addition to the arch, the frames of the individual pendulum units, the jet nozzles, the high-pressure rotary unions and the piping (water supply line) are all made of stainless steel.

Material + finishing	Stainless steel, glass bead blasted	
Working pressure	70 bar	

VERSION		
	3 pendulum units	5 pendulum units
Number of pumps	1	2
Pump capacity in litres	70 l/min (service water)	70 l/min (service water)
Drive power	3 x 0.55 kW	5 x 0.55 kW



High-pressure wash



Preparation

- Pre-wash
- Conveyor equipment
- Information & advertising elements
- Chemical & foam application



Washing

- High-pressure wash
- Washing & polishing
- Care zone



Drying

- Drying



2 HIGH-PRES-SURE GYRO

The space-saving solution for high-pressure washing of wheels and sill areas!

The gyro arms are equipped with high-pressure jets which are mounted in a plate.

The plate is pivoted in and against the direction of travel by means of pneumatic cylinders, while the gyro arms inside rotate simultaneously.

The rotational movement is generated by the water jet alone. This unit is operated fully without a motor!

Material + finishing	Stainless steel, glass bead blasted
Control	Rotation by water jet, pivoting movement by pneumatic cylinder
Working pressure	70 bar
Number of jets	2 x 4 units
Special feature	No motor required





Preparation

- Pre-wash
- Conveyor equipment
- Information & advertising elements
- Chemical & foam application



Washing

- High-pressure wash
- Washing & polishing
- Care zone



Drying

Drying

UNDERBODY WASH



High-quality stainless steel pipework produced in press processes, with jets, which enables thorough cleaning of the underbody areas.

It is operated with recycled service water.

Material + finishing	Geberit Mapress stainless steel piping
Working pressure	12 bar
Litre capacity	120 l/min
Number of jets	12

Working area:



FRONT/REAR HIGH PRESSURE



The front/rear high pressure unit is a special type of high-pressure washer, which is used for cleaning the front and rear of the vehicle.

Equipped with high-pressure jets, the stainless steel housing is mounted directly on the floor of the car wash tunnel. No separate pit is required.

Material + finishing	Stainless steel, brushed
Piping	Seamless drawn stainless steel pipe
Working pressure	70 bar
Jet type	Full jet
Number of jets	2 x 4 units

Working area:



MEDIUM-PRESSURE ARCH



If during the planning process, for example, the integration of high-pressure systems is not possible due to distances, our medium-pressure arch provides an alternative solution.

In the design, priority was given to recreating the washing process in the best possible way with regard to the appearance and result of a high-pressure wash.

The medium-pressure arch is not an equivalent replacement for the high-pressure arch or the high-pressure wash unit, but can be used as an additional product in higher-quality wash programmes.

The arch and the piping are made of stainless steel.

Due to its slim design, installation is generally not a problem, even in existing car wash systems.

Material + finishing	Stainless steel, glass bead blasted
Piping	Geberit Mapress stainless steel piping system
Working pressure	12 bar
Jet type	Flood nozzles
Number of jets	12 jets

Working area:



ROOF ROLLER



The roof roller is an essential part of vehicle washing and is used to clean all horizontal vehicle surfaces, see illustration.

Based on the principle of the two-sided lever, the so-called “counterweight roof roller” is designed as a straightforward rocker and is therefore very easy to use and maintain.

Schleicher roof rollers turn only in one direction, which reduces the load on the individual components to a minimum, in particular the motor-gear unit and clutch.

The base is made of stainless steel and has a glass bead blasted frame. The weight plates are hot-dip galvanized.

Simple showers, foam showers or spray systems can easily be attached to the roof roller frame. Simply contact us!

Material + finishing	Stainless steel, glass bead blasted
Operating principle	Counterweight roof roller
Jet type	Flat spray, 90°
Drive power	0.55 kW
Speed	Adjustable from 37 – 69.5 min ⁻¹
Bearing housing	Thick layer passivated



Preparation

- Pre-wash
- Conveyor equipment
- Information & advertising elements
- Chemical & foam application



Washing

- High-pressure wash
- Washing & polishing
- Care zone



Drying

- Drying

SILL WASHER

In addition to the roof roller, the sill washer is another essential component for vehicle washing.

The brushes on the driver and passenger side of the vehicle ensure thorough washing of the wheel and sill areas.

As standard, the sill washer is supplied with a PE brush set (polyethylene, plastic) with a length of 2400 mm on both sides, which corresponds to a total installation length of 3300 mm.

Other washing materials and lengths are also available on request. Simply get in touch with us!

The brushes rotate in a clockwise and anti-clockwise direction, the application to the vehicle takes place via pneumatic cylinders and is separately adjustable for the driver and passenger side.



Material + finishing	Stainless steel, glass bead blasted
Control	Pneumatic cylinder
Jet type	Flat spray, 90°
Drive power	2 x 0.55 kW
Speed	126.5 min ⁻¹
Bearing housing	Thick layer passivated



Washing
& polishing



Preparation

- Pre-wash
- Conveyor equipment
- Information & advertising elements
- Chemical & foam application



Washing

- High-pressure wash
- Washing & polishing
- Care zone



Drying

Drying

ALL-AROUND
SCRUBBER WITH
SIX ROLLERS



The all-around scrubber with six rollers ensures complete coverage of all vertical vehicle surfaces by means of 2 x 2 side rollers and 2 x cross-over all-around side rollers, which follow the vehicle over a length of 1100 mm. They are mounted in oscillating bearings in order to achieve the highest possible exposure times and best possible application to all vehicle contours.

Material + finishing	Stainless steel, glass bead blasted
Control of side rollers and all-around side rollers	Pneumatic cylinder
Control of short rollers	Spring return
Drive power	6 x 0.55 kW
Bearing housing	Thick layer passivated

Working area:



ALL-AROUND SCRUBBER WITH TWO ROLLERS

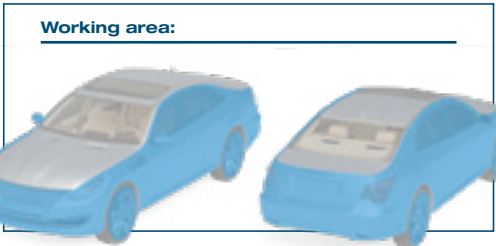
The all-around scrubber with two rollers has two side rollers, which cross-over and work around all vertical vehicle surfaces.

Through the further use of our pendulum units the best possible positioning of the washing material on the vehicle contour is also ensured.



❶ Can be used in both directions, depending on the application

Material + finishing	Stainless steel, glass bead blasted
Control	Pneumatic cylinder
Litre capacity	22 l/min
Drive power	2 x 0.55 kW
Speed	Adjustable from 37 – 69.5 min ⁻¹
Bearing housing	Thick layer passivated



Preparation

- Pre-wash
- Conveyor equipment
- Information & advertising elements
- Chemical & foam application



Washing

- High-pressure wash
- Washing & polishing
- Care zone



Drying

- Drying

ALL-AROUND SCRUBBER WITH THREE ROLLERS

The all-around scrubber with three rollers is the further development of the washer with three rollers and represents an all-around vehicle wash treatment in the smallest of spaces!

In combination with the roof roller, the axial coverage of the side rollers guarantees a perfect washing result of all vertical and horizontal vehicle surfaces.



Material + finishing	Stainless steel, glass bead blasted
Control	Pneumatic cylinder
Litre capacity	37 l/min
Drive power	3 x 0.55 kW
Speed	Adjustable from 37 – 69.5 min ⁻¹
Bearing housing	Thick layer passivated



TOP DRIVEN SIDE WASHER

The side washers from the OB series includes our top driven side rollers.

The different washing heights reflect the different fields of application within the vehicle wash, and their selection depends on the intended use.

With the exception of the OB1000 side washer, pneumatic cylinders are used for the necessary contact pressure on the vehicle, as well as for the control.

SIDE WASHER OB1000

Material + finishing	Stainless steel, glass bead blasted
Control	Spring return
Drive power	2 x 0.55 kW
Washing height	1000 mm
Bearing housing	Thick layer passivated

SIDE WASHER OB1700

Material + finishing	Stainless steel, glass bead blasted
Control	Pneumatic cylinder
Drive power	2 x 0.55 kW
Washing height	1700 mm
Bearing housing	Thick layer passivated



Washing & polishing



Preparation

- Pre-wash
- Conveyor equipment
- Information & advertising elements
- Chemical & foam application



Washing

- High-pressure wash
- Washing & polishing
- Care zone

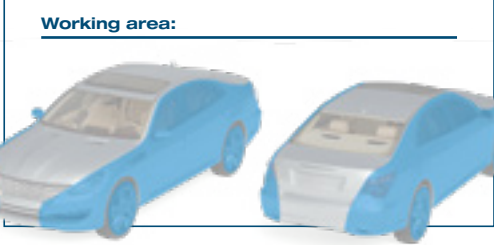


Drying

Drying

SIDE WASHER OB2000+

Material + finishing	Stainless steel, glass bead blasted
Control	Pneumatic cylinder
Drive power	2 x 0.55 kW
Washing height	2000 mm +
Bearing housing	Thick layer passivated



BOTTOM DRIVEN SIDE WASHER

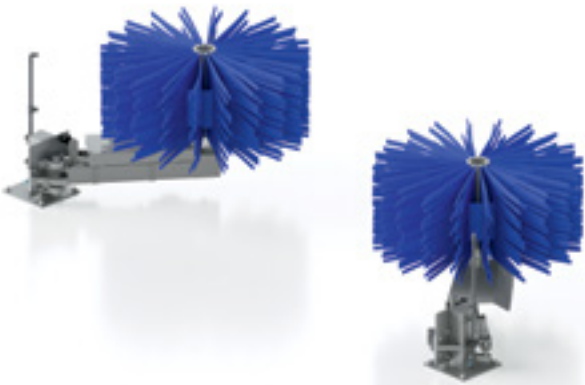
In contrast to top driven side washers, our bottom driven side washers allow for different positioning options within a car wash plant.

The selection is made individually and is subject to various influencing factors.

In addition, the UN1850 front/side washer enables complete coverage of the front vehicle area, which has an additional and supportive effect on the cleaning process, particularly when removing stubborn insect dirt.

SIDE WASHER UN1300

Material + finishing	Stainless steel, glass bead blasted
Control	Pneumatic cylinder
Drive power	2 x 0.55 kW
Washing height	1300 mm
Bearing housing	Thick layer passivated



SIDE WASHER UN800

Material + finishing	Stainless steel, glass bead blasted
Control	Pneumatic cylinder
Drive power	2 x 0.55 kW
Washing height	800 mm
Bearing housing	Thick layer passivated



Preparation

- Pre-wash
- Conveyor equipment
- Information & advertising elements
- Chemical & foam application



Washing

- High-pressure wash
- Washing & polishing
- Care zone

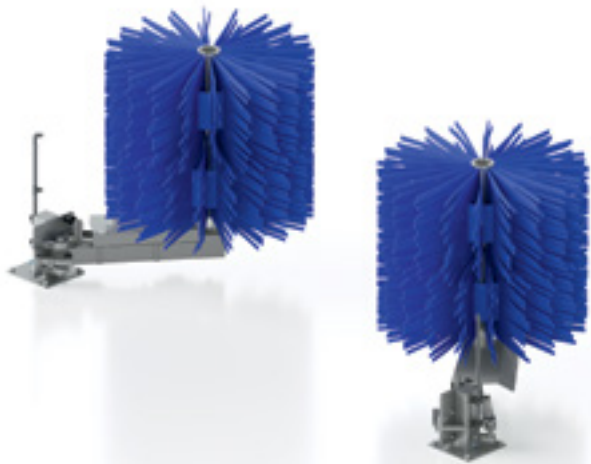


Drying

Drying

FRONT/SIDE WASHER UN1850

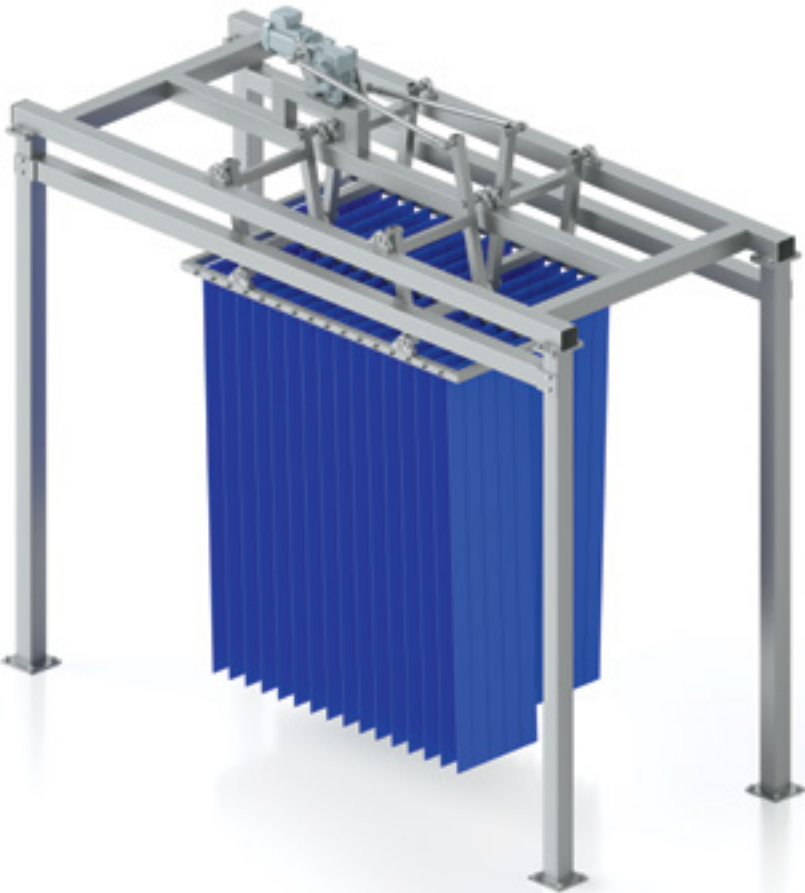
Material + finishing	Stainless steel, glass bead blasted
Control	Pneumatic cylinder
Drive power	2 x 0.55 kW
Washing height	1850 mm
Bearing housing	Thick layer passivated



❶ Cross-over front wash-
ing



CROSS-MITTER



The washing material attached to the cross-mitter works crosswise to the direction of travel alternately towards the driver's and passenger's side.

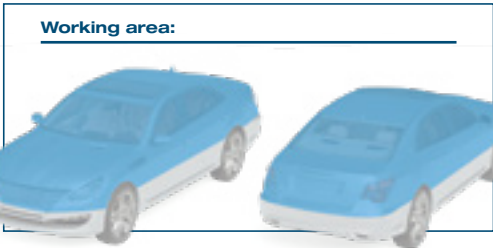
The pivoting motion is generated exclusively by a single, centrally mounted drive motor, which achieves the highest service life and lowest maintenance costs.

Thanks to the plug-in system, cleaning or changing the washing material is very easy and can be done in no time at all.

In combination with the all-around scrubber with two rollers, the upper horizontal vehicle surfaces and the vertical vehicle surfaces can be cleaned in a targeted manner.

The cross-mitter can also be supplied in a longitudinal version. The washing material swings in and against the direction of travel.

Material + finishing	Stainless steel, glass bead blasted
Drive power	0.75 kW
Drive train	Central drive, eccentric, pushrods, double-ended lever
Number of textile strips	160
Number of swivel tables	2



INSIGHT INTO OUR PRO- DUCTION

Car washes from Schleicher Autowaschtechnik combine efficiency and cost-effectiveness. This successful combination is based on extensive know-how, years of experience and state-of-the-art production technology.



The production hall of Schleicher Autowaschtechnik

We offer complete construction of a car wash line as well as the production of the necessary components in-house. We use only high-quality materials such as stainless steel and aluminium, which we process with ultra-modern CNC machining centres and finish them carefully by hand. The car wash is controlled by our sophisticated software, which we continuously develop; the associated control cabinets also come from our own planning and production facilities.

All components leave our production hall ready-for-assembly, including cabling and water supply. After a final quality and function check, we transport the new car wash directly to site.

In the course of construction we can also consider the special requests and wishes of our customers. This includes, for example, painting the entire car wash with a paint that was specifically developed for us, which protects all surfaces from the adhesion of dirt and makes cleaning easier.

1 RAIN SHOWER

The rain shower can be used as a rinse aid for rinsing the service water or for applying cleaning or care products.

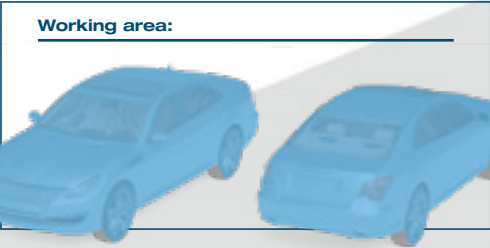
Material + finishing	Stainless steel, glass bead blasted
Work area	2000 mm
Litre capacity	15 l/vehicle
Process media	Fresh water, service water, chemicals



2 SPRAY SYSTEM

The spray system is used when applying care waxes or chemical drying aids (CTH), osmosis water or serves as a rinse aid.

Piping	Geberit Mapress stainless steel
Litre capacity	29.6 l/min
Jet type	Flat jet, spray angle = 90°
Number of jets	8 units, all equipped with pressure-dependent water-saving valves



Preparation

- Pre-wash
- Conveyor equipment
- Information & advertising elements
- Chemical & foam application



Washing

- High-pressure wash
- Washing & polishing
- Care zone



Drying

Drying

3 FOAM SHOWER

The foam shower covers vehicles with polishing foam, foam wax or various other foamed cleaning agents.

Material	Stainless steel
Surface finishing	Glass bead blasted
Process media	Compressed air, fresh water, chemicals
Number of foam cartridges	2
Litre capacity	10 l/vehicle



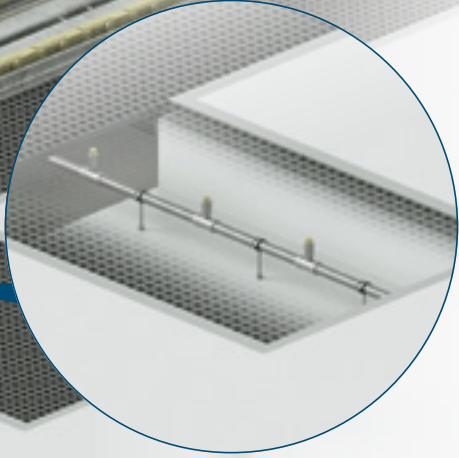
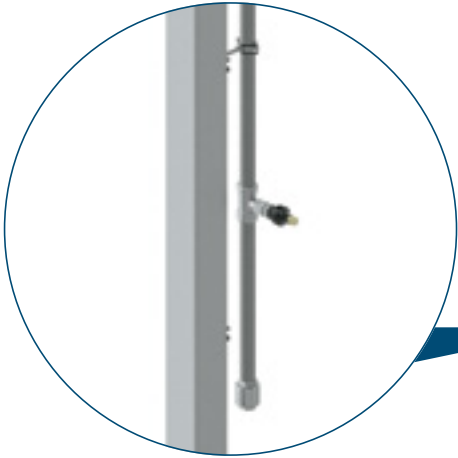
4 UNDER- SIDE PRESER- VATION

Used to preserve the underbody areas. Usually used in conjunction with underbody washing.

Material	Geberit Mapress stainless steel piping
Litre capacity	14.8 l/min
Process media	Fresh water
Jet type	Flat spray, 90°
Number of jets	4



1 Integrated non-return valves enable precision control and prevent the lines from running dry



DRYING



Preparation

- Pre-wash
- Conveyor equipment
- Information & advertising elements
- Chemical & foam application



Washing

- High-pressure wash
- Washing & polishing
- Care zone



Drying

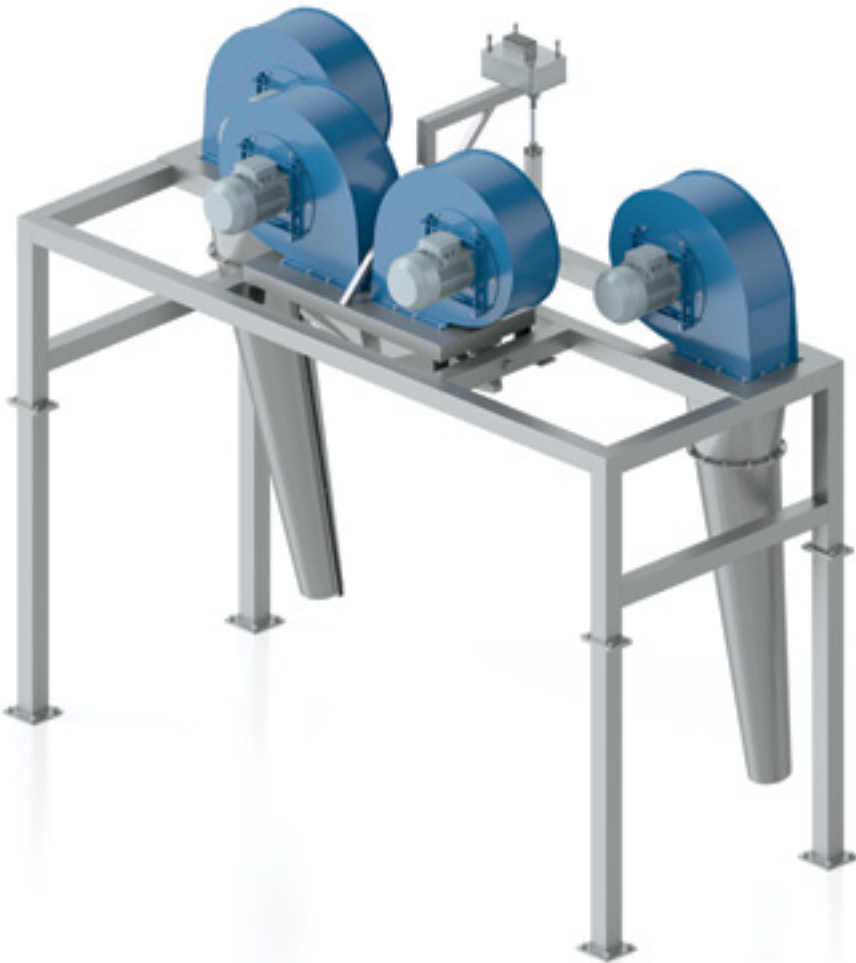
Drying

BLOWER WITH 4 CENTRIFUGAL FANS

The blower unit with 4 centrifugal fans is equipped with a pivoting roof jet and two rotating side jets.

The entire unit is designed for maximum service life: The centrifugal fans are hot-dip galvanised and painted, the air ducts and the frame are made entirely of stainless steel.

❶ Pivoting roof jet



❷ Rotating side jets

Material + finishing	Stainless steel, glass bead blasted
Process media	Ambient air
Drive power	4 x 7.5 kW
Air output	37584 m³/h
Special feature	Pivoting roof and side jets

Working area:



BLOWER WITH 6 CENTRIFUGAL FANS

The blower unit with 6 centrifugal fans is equipped with two pivoting roof jets and two rotating side jets.

The entire unit is designed for maximum service life: The centrifugal fans are hot-dip galvanised and painted, the air ducts and the frame are made entirely of stainless steel.

❶ Pivoting roof jets



❷ Rotating side jets

Material + finishing	Stainless steel, glass bead blasted
Process media	Ambient air
Drive power	6 x 7.5 kW
Air output	56376 m³/h
Special feature	Pivoting roof and side jets

Working area:



Drying

SIDE
DRIER
OB1700

Material + finishing	Stainless steel, glass bead blasted
Control	Pneumatic cylinder
Drive power	2 x 0.55 kW
Drying height	1700 mm
Bearing housing	Thick layer passivated



The two side driers OB1700 and OB2000+, in combination with a revolving chain mitter or a cross-mitter, offer a textile final drying process that can be installed in the smallest of spaces and is therefore primarily intended for use in short car wash tunnels.

The actuation and control according to the washing programme is achieved via pneumatic cylinders.



Material + finishing	Stainless steel, glass bead blasted
Control	Pneumatic cylinder
Drive power	2 x 0.55 kW
Drying height	2000 mm +
Bearing housing	Thick layer passivated



Preparation

- Pre-wash
- Conveyor equipment
- Information & advertising elements
- Chemical & foam application



Washing

- High-pressure wash
- Washing & polishing
- Care zone



Drying

Drying

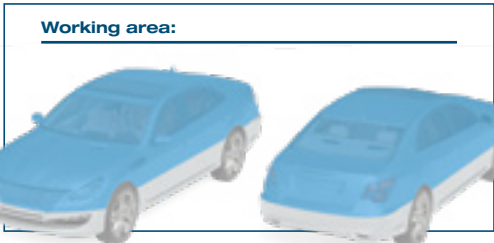
REVOLVING
CHAIN MITTER



The revolving chain mitter has been specially developed for use in short car wash tunnels. With an installation dimension of only 400 mm, it can be easily integrated almost anywhere.

The textiles strips of drying material move crosswise to the conveyor direction and are simply hung on hooks, making them easy to replace for cleaning purposes.

Material + finishing	Stainless steel, glass bead blasted
Drive power	0.75 kW
Number of textile strips	45
Drive train	Drive, drive wheel/output wheel, chain drive
Chain speed	0.61 m/s
Special feature	Stainless steel deflection pipes prevent the textile strips from knotting together



Drying

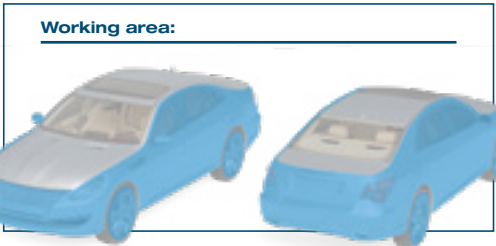
ALL-AROUND DRIER
WITH TWO ROLLERS

The all-around drier with two rollers has two side rollers, which cross-over and work around all vertical vehicle surfaces.

The unit can also be delivered with a roof roller or in combination with the cross-mitter to cover the vertical vehicle surfaces as well as the horizontal vehicle surfaces.



Material + finishing	Stainless steel, glass bead blasted
Control	Pneumatic cylinder
Drive power	2 x 0.55 kW
Speed	Adjustable from 37 – 69.5 min ⁻¹
Bearing housing	Thick layer passivated



Preparation

- Pre-wash
- Conveyor equipment
- Information & advertising elements
- Chemical & foam application



Washing

- High-pressure wash
- Washing & polishing
- Care zone



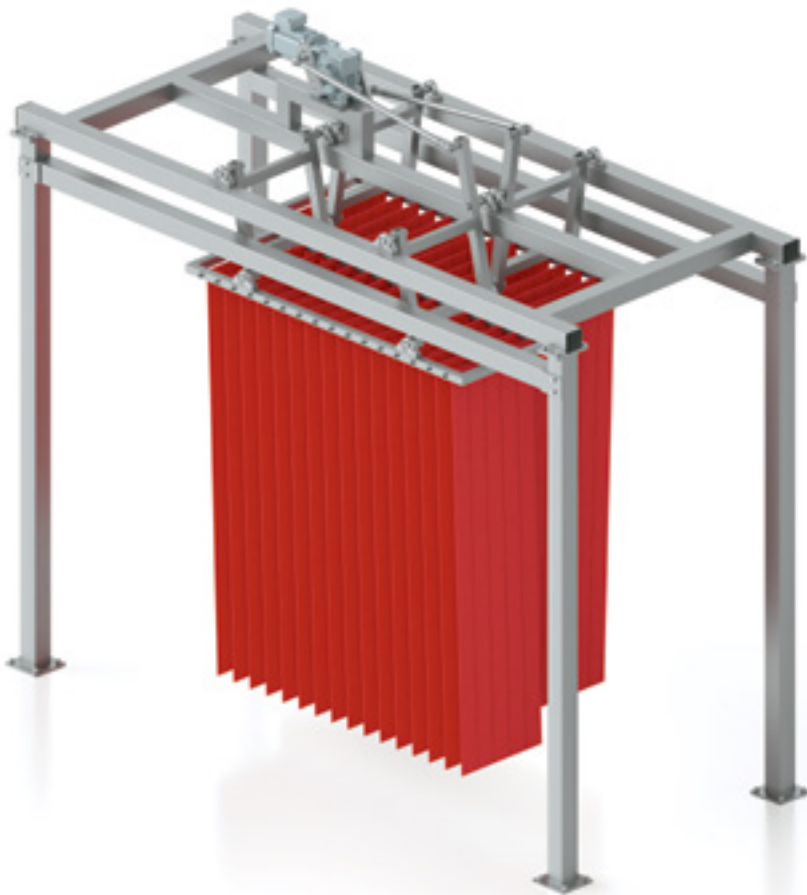
Drying

Drying

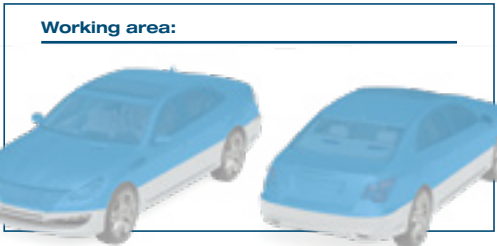
CROSS-MITTER

The drying material attached to the cross-mitter moves crosswise to the conveyor direction, alternating between the driver and passenger side.

The cross-mitter can also be supplied in a longitudinal version. The drying material swings in and against the direction of travel.



Material + finishing	Stainless steel, glass bead blasted
Drive power	0.75 kW
Drive train	Central drive, eccentric, pushrods, double-ended lever
Number of textile strips	160
Number of swivel tables	2



Drying

ALL-AROUND DRIER
WITH 3 ROLLERS

The roof roller processes all horizontal vehicle contours, the two side rollers cross-over and are therefore able to cover all vertical vehicle surfaces.

A cross-mitter can also be used instead of the roof roller.



Material + finishing	Stainless steel, glass bead blasted
Control	Pneumatic cylinder
Drive power	3 x 0.55 kW
Speed	Adjustable from 37 – 69.5 min ⁻¹
Bearing housing	Thick layer passivated



Preparation

- Pre-wash
- Conveyor equipment
- Information & advertising elements
- Chemical & foam application



Washing

- High-pressure wash
- Washing & polishing
- Care zone



Drying

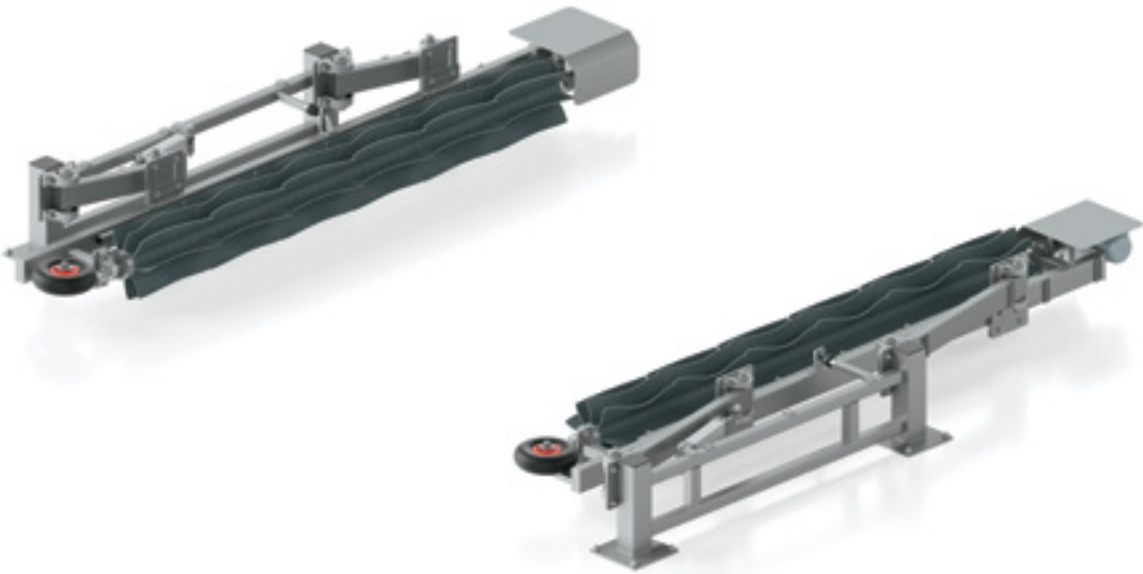
Drying

TYRE BLACKENER

The tyre blackener colours the tyres in a long-lasting rich black.

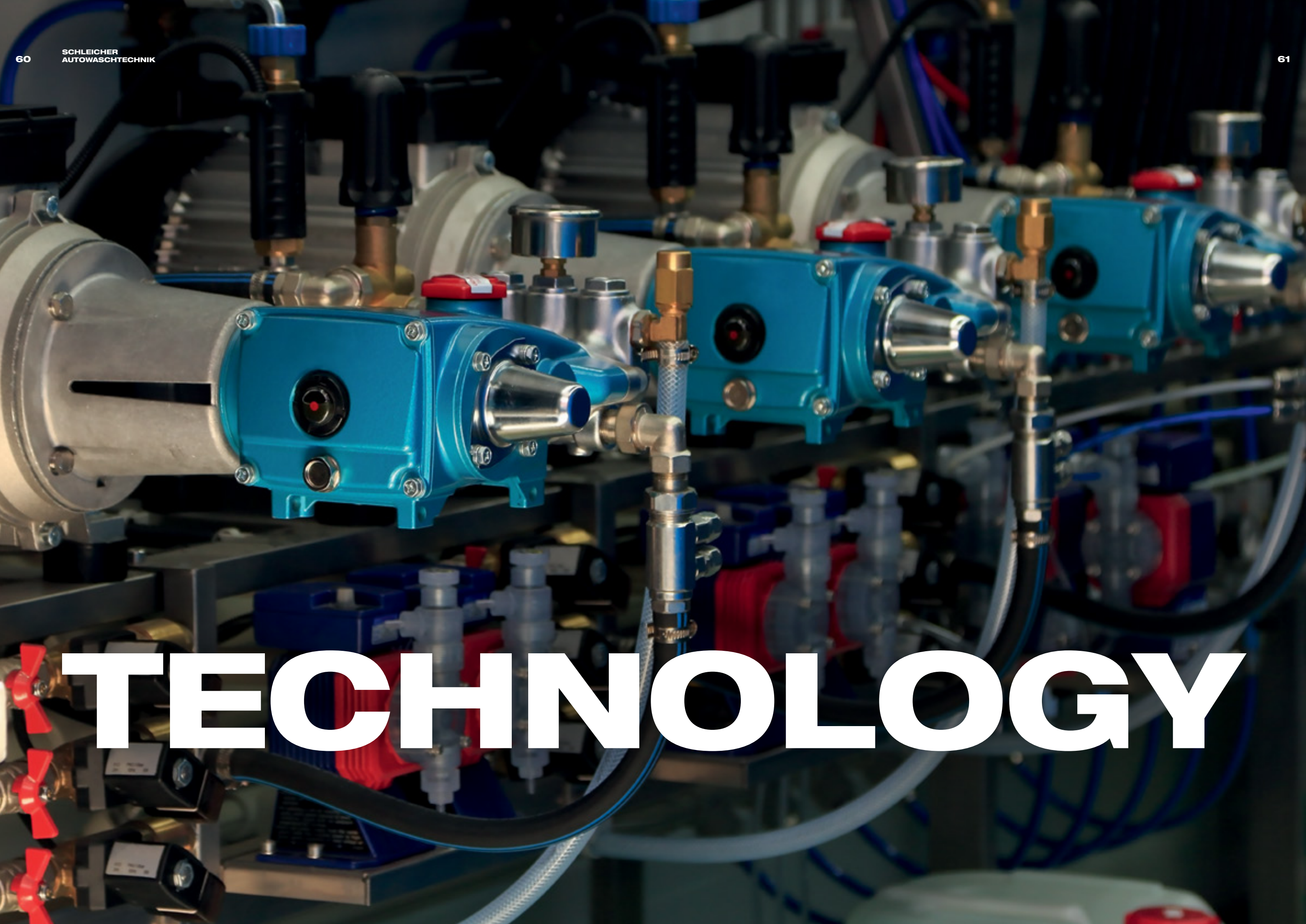
This unit is suitable for use in premium washes or as an additional option.

The design is based on the proven principle of our sill washer.



Material + finishing	Stainless steel, glass bead blasted
Control	Pneumatic cylinder
Drive power	2 x 0.55 kW
Speed	126.5 min ⁻¹
Bearing housing	Thick layer passivated



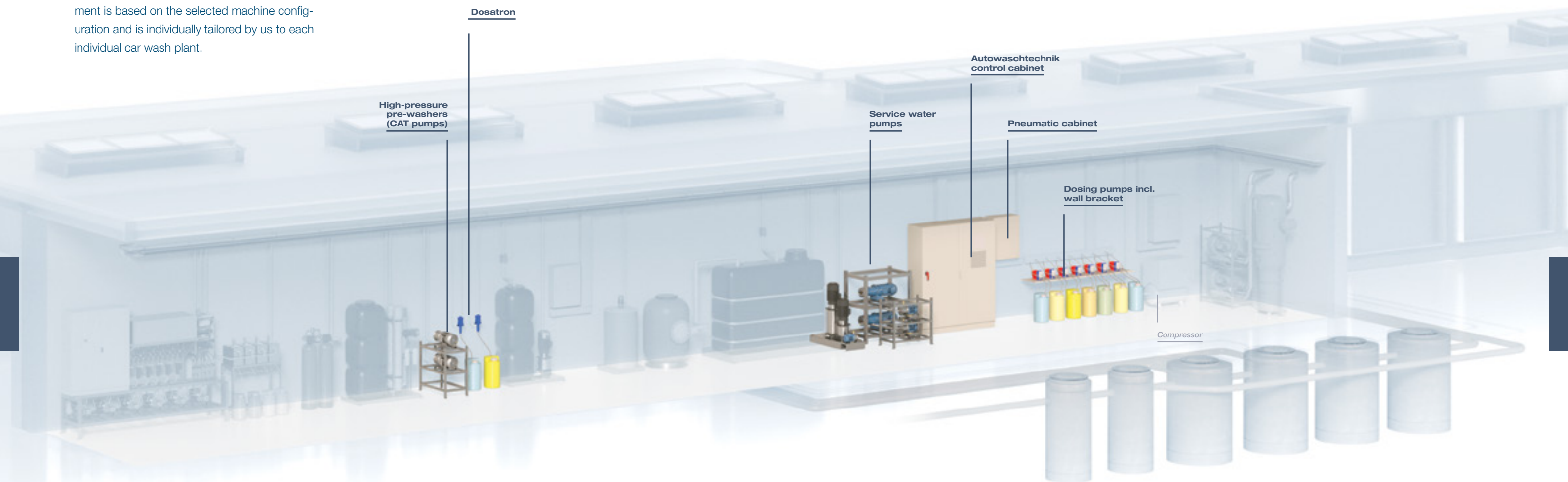


TECHNOLOGY

ENGINEERING ROOM

The engineering room accommodates all the systems necessary for operating your car wash, such as the control system, pneumatics, water and chemical supply.

The selection and dimensioning of the equipment is based on the selected machine configuration and is individually tailored by us to each individual car wash plant.

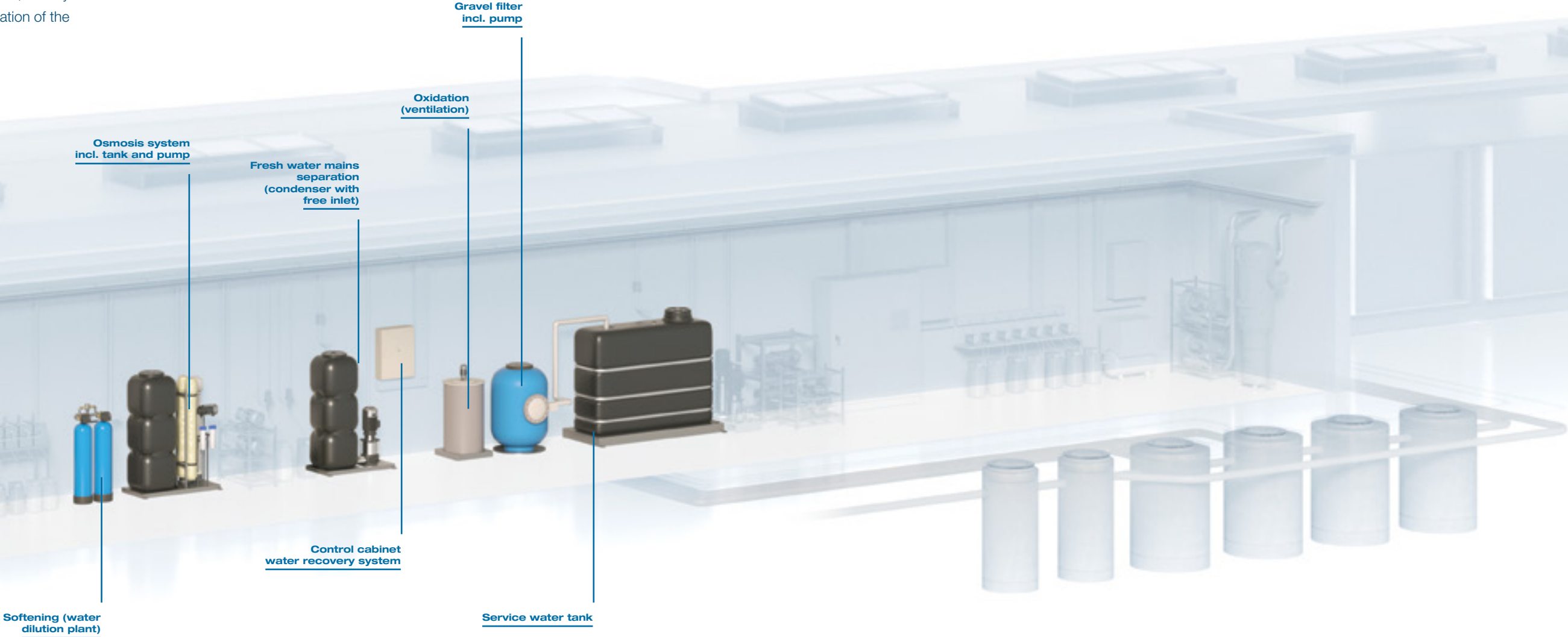


	OPERATION SITE
Control cabinet	Pre-wash area, car wash
Pneumatic cabinet	Car wash
Dosing pumps	Car wash: preparation, washing, care
Service water pumps	Car wash: pre-wash area, preparation, washing
High-pressure pre-washers	Pre-wash area
Dosatron	Pre-wash area
Osmosis device and softening device	– Car wash: care – Self-service wash bays

WATER TECHNOLOGY

Water technology comprises the separation of fresh water, the treatment of fresh water to produce osmosis water, the recycling of industrial water and finally the storage of service water.

In order to avoid unpleasant odours, we rely on targeted and consistent ventilation of the systems.



Capacity	Adapted individually to the plant
Control	PLC / control automation
Process media	Service water
Service water storage tank volume	Individual, depending on equipment (approx. 2000 – 3000 l)
Special feature	Avoidance of unwanted odours by permanent oxygen supply

A close-up photograph of a person's hand holding a high-pressure water gun, spraying water onto the windshield of a car. The water is creating a large, turbulent spray. The person is wearing a light blue short-sleeved shirt and a brown wristband. The background is blurred, showing a bright, outdoor setting.

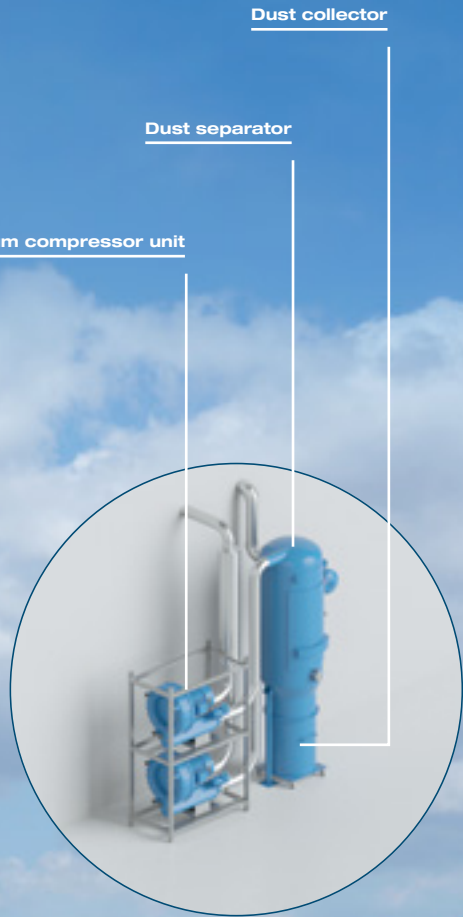
SELF-SERVICE WASHING & VACUUMING

CENTRAL VAC-UUM SYSTEMS

Central vacuum systems are designed for continuous and high suction performance.

Their central design makes cleaning and maintenance work particularly easy, and no space is lost in the vacuuming area for the required technology.

The use of shut-off valves allow for free vacuuming or payment-based vacuuming.



Dust collector

Dust separator

Vacuum compressor unit

Operating terminal

Gate valve

Vacuum hose

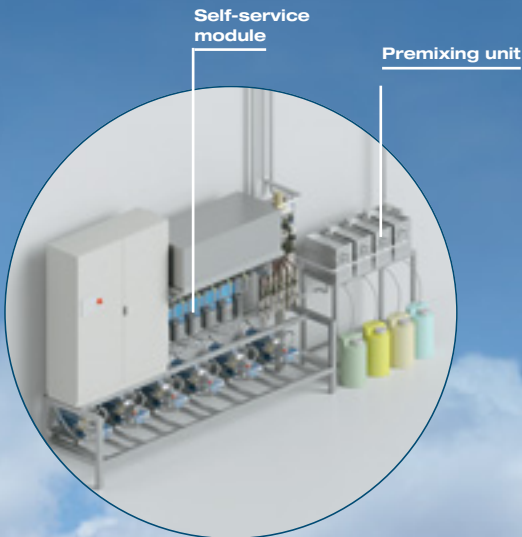
Suction nozzle

Nozzle holder

Mat beater

Suction power	1500 m³/h
Vacuum	– 0.28 bar
Output	1 – 4 pumps (11 kW)
Noise level	72 dB(A)
Residual dust content filter	0.5 %

SELF-SERVICE WASH BAYS



Double ceiling gyroscope

Material + finishing	Stainless steel, glass bead blasted
Litre capacity (high pressure)	10 l/min/pump
Pump capacity (high pressure)	2.2 kW/pump
Litre capacity (foam brush)	Total output = 22 l/min
Pump capacity (foam brush)	7 bar
Number of pumps	4 – 8 units
Lance options	<ul style="list-style-type: none">– High-pressure wash lance– High-pressure foam lance– Low-pressure foam brush

Our self-service wash bays have been developed in cooperation with many years of self-service operators.

This experience is reflected in the aspects of operational safety, handling and ease of maintenance.

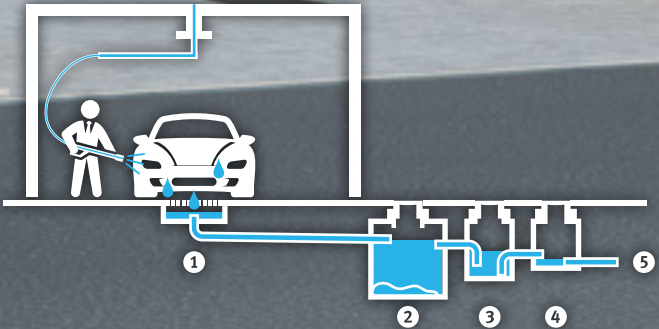
The modular and equally compact design ensures short downtimes when replacing existing systems and requires little installation space.

Programme overview

Foam brush

Operating terminal

High-pressure lance



PAY STATIONS



User interface with freely configurable control elements:

- up to eight different wash programmes
- up to four additional services (e.g. underbody washing, foam wax, etc.)
- up to seven different payment methods, such as voucher, complaint, erroneous wash and EC



Touch screen monitor (splash-proof IP65)



RFID card encoder

As an option, payment with e.g. EC-card, DKV and UTA via e.g. a mobile payment terminal is possible (free choice of provider)



Stainless steel cash drawer



Thermal receipt printer



Uninterruptible power supply (UPS)



Moveable



Material	Stainless steel
Surface	Brushed
Software	<ul style="list-style-type: none">- Billing software- Item management- Customer master maintenance- Automatic system backup

gobd certified

GoBD export interface V1.0

certified by Audicon GmbH in June 2016

MAINTENANCE & SERVICE

Thanks to high-quality materials and robust, reliable technology, Schleicher car washes are extremely low-maintenance and user-friendly. It goes without saying that an experienced service team is available to deal with all customer issues quickly and competently.



We ensure that our customers can work reliably.

We make a quality promise to our customers: Choosing a Schleicher car wash system means choosing durability, efficiency and reliability. We pride ourselves on the production of high quality car washes – and not on the sale of spare parts.

When a new car wash plant is put into operation, we carry out a detailed, machine-specific employee training course in which we also provide general information and knowledge on the targeted use of cleaning chemicals, as well as tips on dealing with customers and successful marketing.

On request, we can also carry out regular inspections of our car washes to assess the general condition, point out maintenance issues and inspect the wear and tear of washing and drying materials. In this way, we help our customers to work reliably every day.

In case of any uncertainties or problems, our service technicians are available to help you – over the phone, via online remote maintenance or directly on site.

Imprint

Publisher:	SCHLEICHER AUTOWASCHTECHNIK In der Eller 2 36119 Neuhof
Printing:	JD Druck GmbH Umgehungsstraße 39 36341 Lauterbach
Artwork:	3djart creative services www.3djart.de
Photos:	Salih Usta Photography In den Gründen 16 36093 Künzell
Design:	SCHOENE AUSSICHT Ideenagentur GmbH Am Alten Schlachthof 4 36037 Fulda